



Bold plan for Paparoa's future Paparoa lifestyle village



An exciting proposal by Progressive Paparoa Inc. for a new community endeavour will be formally unveiled at the Lions *Pioneer Luncheon* on 20th March. Several years ago PPI considered the establishment of a 'village within the village' to provide suitable accommodation for local residents wishing to downsize their homes in their later years. Regrettably an economic downturn stalled the prospect.

With changes to the economy and a growing sector of retirees, PPI have formed a steering committee to re-examine the feasibility of this ambitious project. Suitable flat land has been identified close to the Village and agreement in principle to purchase has been reached with the owners.

Before progressing further, we need to gauge the level of support from the wider community and those currently considering their future. If there is sufficient interest PPI would establish a community charitable trust to develop and administer a 'lifestyle village' consisting of modern architect designed eco-friendly homes. These would be specifically targeted to suit the needs of local residents looking to enjoy a carefree retirement close to friends, neighbours and family.

Staying connected and living a full life in Paparoa has many benefits. Villages provide security, often an important point for families who are not close by to keep an eye on things. They are a safe place

Village in the Valley



to leave your possessions, if you're the travelling kind! Worry-free maintenance and the grounds kept trim while you're away is always an advantage.

Affordable accommodation often means freedom from the mortgage at last and perhaps enough left over for that motor home or boat you have always promised yourselves. Being able to retain your community links with familiar friends and activities is valuable. Many people have chosen to remain in or have retired

to Paparoa as a lifestyle choice. This proposal extends that choice.

This project is the most significant development in Paparoa for many years. The greater community also benefits. We retain our friends, neighbours and family as well and the bigger homes are freed up for younger growing families to move into. This would result in increased business for local tradespeople and retailers, with the 'village' creating new job opportunities.

This is a major undertaking. Before PPI can take the proposal further, we need information. We have produced a short questionnaire (available at Skelton's) where you can indicate your support and also leave your contact details for further information. This will also be available at the Pioneer Luncheon.

If you are at all interested in this proposal or have an opinion you would like to express please make sure you fill out the questionnaire. Your comments will be very valuable.

Graham Taylor,
Chair, Steering Committee



What a great Show

The 139th Paparoa A&P Show was a great success with perfect weather on the day. Visitors described the Show as "One of the Best". Parents commented on, "lots of things for children and teenagers to do". Equestrian, cattle and dairy goat entries were all up on last year and the Indoor Section with its food exhibits, produce, arts & crafts and children's entries was extremely well supported.

The number of stallholders increased by over 80% offering a wide variety from food to products & services. Several food stalls ran out of food, *Mel the Coffee Girl* had a record day, and money taken out of the eftpos machine was up by over 100%. If you were one of the many happy visitors at this year's Show please tell your friends how good it was. If you didn't make it to this year's Show make sure to come next time.

Paparoa Press

PUBLISHED MONTHLY BY

Progressive Paparoa Inc. (PPI),
for Paparoa, Pahi, Matakohē,
Whakapirau and Tinopai.

CIRCULATION 1,000

CONTACT US

- press@paparoa.org.nz
- ph 09 431 7209
- PPI, PO Box 107, Paparoa 0543
- www.paparoa.org.nz

ADVERTISING

Rate Card available by email
Booking & Copy deadline:

15th of month

Publication date 1st of month

Sports opportunities Table Tennis



Table tennis has some new players with lots of experience, so we are having plenty of fun, competition and learning many new skills. Don't think it's only for young people, our hard to beat player is Al who is in his 70s. Why not come and join us, it helps to have a few more players so everyone gets a turn and some breaks. We play doubles and singles, so can cater for all levels of playing ability. Even if you haven't played since school, your muscles will remember how to play even if your brain is not so sure! Tues 7.30pm Sports Pavillion. Enquiries to Pete 431 6822.



Badminton

From April 23 badminton will be held at the Paparoa Hall every Thursday evening – 5.30pm for kids and 7pm for adults and older, or experienced students. All levels of experience are welcome and we will help you learn new skills and while having fun doing it.

Tennis

Children's Tennis Coaching

Tuesday afternoons: Beginners 4.30-5.15pm,
More experienced 5.15 - 6pm

Adults' Tennis Tues evenings from 6pm,
Weds afternoons from 1pm.

All welcome. Some racquets are available.

The tennis courts are open all year round for members or for casual play. Casual play only \$2 a game or a family sub is \$70.

Professional coaching group sessions with Grant van Dalsum

Thursday afternoon March 5 and 19. Beginners 3.30-4.15pm,
More confident 4.15-5.15pm, Adults 5.15 - 6.30pm

Sausage sizzle will be available free for participants.

Contact Sue Skelton 431 6224 geosueskel@yahoo.co.nz



'The Altos' Dinner Theatre

**An evening of
pure escapism!**

Otamatea Repertory Theatre's latest venture is *The Altos* (like *The Sopranos* - only lower), a dinner theatre experience.

The audience will be treated to a 3-course dinner, and, while the actors unfold the comic murder-mystery, be prepared to dodge the bullets! Get in the mood for a fun-filled evening and dress up as your favourite gangster or moll. There are prizes for the *best dressed* and you may win a prize if you can work out *whodunnit and why!*

The script, written by David Landau, is loosely based on the HBO series *The Sopranos*. The evening is a BYO event and you can purchase tickets for the Mar 20th Paparoa show at Paparoa Drapery.

ORT

PAPAROA FARMERS MARKET
LOCAL GOODS DIRECT FROM THE PRODUCER

Fortnightly **SATURDAYS**
gam-noon at the Village Green

March 7th 21st
April 4th 18th
ph Graham 431 7209



Looking Ahead

Our consultation document

Kaipara District Council

Tell us what you think

More info at www.kaipara.govt.nz

The Kaipara District Council has just released its consultation document, Looking Ahead. This document sends out our chosen options for our 10 year plan. It also sets out the options we considered and rejected and why we rejected these.

We want you to tell us if we have chosen the right options. If not, what should we be doing? For more information please go to www.kaipara.govt.nz or come to a Round Table meeting near you.

This will be your opportunity to talk with a commissioner or a senior member of staff about the things you think we should know.

Round Table Meetings:

Sunday 8 March	Paparoa Hall	2pm
Tuesday 10 March	Kaiwaka Sports Club	6pm

Otamatea Repertory Theatre Inc proudly presents

The Altos

in conjunction with Play Bureau NZ

Written by David Landau

like The Sopranos - only lower

Interactive dinner theatre - be prepared to dodge the bullets!

6 VENUES

Fri March 20 **PAPAROA HALL**  \$50 PP, GROUPS OF 6+ \$45 PP

Sat March 21 **KAIWAKA HALL**

Fri March 27 **RUAWAI HALL**

Sat March 28 **MAUNGATUROTO COUNTRY CLUB**

Fri April 17 **MANGAWHAI VILLAGE HALL**

Sat April 18 **WAIPU CORONATION HALL**

All shows 6pm for pre-show mingles, show starts 6.30pm

BOOKINGS ARE ESSENTIAL!

COME AS YOUR FAVOURITE GANGSTER OR MOLL!

PRIZES FOR BEST DRESSED

Dinner Show March 20th Paparoa Hall
Tickets available for purchase at Paparoa Drapery
Get your group together now! BYO

WAG ready to roll ... and rock!

Once you see our familiar logo, you know that planning for the Paparoa Wearable Arts Gala (WAG) is well underway!

Designed by Paparoa artist Helen Budd, the logo represents everything WAG is about – stylish, creative, innovative, carefree and uninhibited design; as well as cheeky and full of fun. This year, WAG is not only building on its strong legacy; it's introducing a true celebration of 10 years of wearable art in our community.

Grab your diary

We've got some dates for you! This year, our two shows are on Saturday 12th September. You can either come to the Matinee or the Evening Gala.

2015 theme

The theme for this year has been announced! It's "Rock 'n Roll". It's great to see our strong relationship with local schools already showing. Paparoa Primary School has embraced the theme and is running "Rock 'n Roll" lessons so they can be part of the celebration.

New Categories

Five new exciting categories have been chosen to give entrants the opportunity to showcase their creativity:

1. RECYCLED

Anything goes: from the household, farm, back yard. All your scraps and left-overs can provide resources for this section.

2. OPEN

No restrictions. Let your imagination run wild.

3. INTO THE FUTURE

How far ahead and into the future can you imagine technological, social, and spiritual developments?

4. DESIGN AND BUILD

Construct your entry in your shed or workshop. Moving parts could provide a welcome addition.

5. MAKE US LAUGH!

Bring out your humorous, outlandish, & colourful ideas to make us laugh.

Special Category

As always, WAG is looking to encourage young people to participate. The special category for this year is "CAPES", which is open to entrants 12 years and under.

New Prizes Importantly, the prizes have changed. First prize for each of the five categories is \$250; second prize is \$100.

Our Supreme Award remains unchanged. One lucky entrant will spend the weekend in Wellington with a friend; and experience the spectacular World of Wearable Arts.

Big changes for our entrants

There are some big changes for our entrants this year which includes a new location for model preparation, a special *entrant only* viewing area, and a familiarisation workshop.

Entry is easy

Right now, the organising



committee is busy attracting entrants. Early bird entries close in May so expressions of interest are sought now.

Sponsorship support Local businesses and individuals have supported WAG generously in the past. If you're interested in partnering with WAG this year, we'd love to hear from you.

More info: Rach 0221 70 55 99 or wag@paparoa.org.nz

The Glass Guy

Broken
Window
Repairs

Phone Colin
09 431 6595

WEBER BROS.
LTD

Builders

For Quality Custom Built Homes
and all your building needs



Ph / Fax
Ralph 09 431-7087
Gary 09 431-7498

Paparoa Motor Camp



check out
our
self-contained
cottages

- Tent and Van sites, Cabins, Kitchen,
- Showers ● Internet available ●
- Public Laundry facilities ● Pump-out Station

Ph 09 431 6515

cnr SH12 and Pahi Road, Paparoa

Your Tyre Specialists!

With 50 years of auto experience between them, Dean and Reece will make sure you are fitted with the right product for the right job.

- Tyres
- Wheel Alignment
- Puncture repair
- Warrant of Fitness

Give us a call to make a booking.

Garnetts Tyre Service

2 Gorge Rd, Maungaturoto. Ph 09 431 8255.

BRIDGESTONE TYRE CENTRE

CAR REPAIRS

Cam's Autos

For all mechanical repairs and warrants of fitness. We service cars, 4WDs, trailers & utes.



Paparoa Valley Road
Ph 09 431 6620

Birt & Currie Surveyors Ltd



Local Phone
09 280-9591

Timely,
friendly &
personal
service

info@landsurveyors.co.nz
www.landsurveyors.co.nz
PO Box 120 Paparoa 0543

WHEN A SMALL SEED IS SOWN! The White Rock Gallery

Isn't it amazing how a small seed can grow quickly when it gets attention and nurturing? And that's exactly what has happened with the 'birth' of the White Rock Gallery. The idea was planted on the fertile soil of Paparoa's creative community, and nurtured by its 30 plus members & an extremely talented committee of six.

After approximately two months of hard work and enthusiasm, the dream became a reality. Opening for the first time on 2nd February with modest expectation of visitor numbers, locals embraced the idea and showed their support immediately.



Passing visitors also stopped to view and to everyone's surprise sales were made on the first day and the trend continued throughout the week.

On Saturday 7th an 'Official Opening Day' was held with a celebratory air, visitors were treated to refreshing punch and a delicious array of snacks. The first arrivals came en route to the A&P show and continued on en masse throughout the day, and an air of excitement was present among the members as the sales continued.

"We were surprised by the variety and standard of work."

"It has character and warmth."



"We were surprised by the professional display."

"The prices are very reasonable for the quality of work."

These were some of the many comments received and taken on board.

Once again, Paparoa has shown its community spirit and displayed the depth of talent within the Kaipara area. It's easy to see why we all choose to live here.

PP

Note from the Library

As White Rock Gallery is open every day, Paparoa Library is now able to have **an out-of-hours return box**. If you are passing through Paparoa when the gallery is open, please drop your books into the slot in the white cabinet inside the door. Thanks White Rock Gallery. We wish them a long and successful presence in Paparoa.

Paparoa Sports & Games Afternoon with Sausage Sizzle

The Paparoa Sports & Recreation Association, PPI, Show Committee, and other groups, are holding a fun family sports and games afternoon at the Paparoa Showgrounds on **Saturday 28 March**.

Touch rugby, tennis, softball, table tennis, obstacle course, plus games such as egg throwing, sack races, and more, will be available during the afternoon. Arrive 3.30pm for 4pm start, sports and team games followed by bbq sausage sizzle at 6.30pm. Spot prizes for teams.

For more details check school newsletters, posters and Paparoa website, or contact Libby Jones 431 6822 or Ken Chambers 431 7443. **Entry to the sports afternoon is free. All welcome.**

Crompton Engineering Ltd

Phone/fax 09 439 2393
31 Jellicoe Road, Ruawai



Hay Racks
- covered
or uncovered

Palm Kernel
Trailers



website: cromptonengineering.co.nz
email: crompton.eng@xtra.co.nz



Rhoda Morrison

Your Full Time Local Real Estate Agent

Top Rural Salesperson
last 4 years Region 1

Listing to sell NOW

09-431 6912
0274 800 691

rhodamorrison@xtra.co.nz
www.roperandjones.co.nz



first
national
REAL ESTATE

Roper & Jones

Dargaville Realty Ltd
Licensed REAA 2008



2015 Paparoa A&P Show indoor section

This year we were delighted to have a very large number of excellent entries. Some *stand-out* exhibits were:

The cross stitch pictures, the beautiful quilts, the delicate knitting and crochet, and the excellent standard of photographs, floral art & paintings. Also, the huge baking section (including a lovely unicorn birthday cake), beautiful dahlias and, as always, the fantastic vegetables. We are very lucky to have such a talented population in our area.

Zephyr Oysters' art section 'Kaipara Structure in any medium' was won by Deb Clapperton, with her mosaic replica of the Old Paparoa Post Office in a very close contest.

Trevor Brljevic again achieved success with his wide range of entries in several sections with some tough competition. Despite recent weather

conditions, the standard of flowers & vegetables was high.



Prize winners are too numerous to mention, but congratulations to all entrants for their support and effort in helping make the Show such a success.

One of the really amazing things about our show is the number of volunteers who



come forward to help - our long serving stewards, their helpers and others who just turn up. People just pitch in and get the work done without any fuss.

This year our indoor section team was greatly helped by a number of new recruits, including six Otamatea High School students. With this extra help, the work was done much faster and the school entries reached greater heights on the walls.

A huge thank you to all those wonderful people who entered, helped, and came along to help celebrate our 139th North Kaipara A&P Show.

Stella Clyde



**ROADING • EARTHWORKS
DRAINAGE • SITEWORKS**

For enquiries, contact Shaun:

Cell: 021 222 0272

Home: 09 431 8339

Email: admin@huband.co.nz

Registered Drainlayers

REMEMBER!



Your
pets
need a
holiday
too

Big Day Out in Kaipara 28 March

Get your boats and rods out for the **Pahi Fishing Competition**. Starting at 7am it will be a great day out, with prizes, duck bucks, fun, raffles and later on, dinner and music at the clubrooms

If fishing isn't your activity, then choose either Maungaturoto or Ruawai (or both) to search out bargains at the local **auctions**.

The annual **Rotary Auction**, at Maungaturoto Primary School, starts at 10am. Look for household goods and furniture, and heaps more, at Rotary's biggest fundraiser for the year.

Ruawai Lions Club's annual charity auction will be held at the Kaipara Kumara forecourt from 9am at the trading table and the auction starts at 10am. Look for sponsored farming items, antiques, furniture, electrical appliances, toys, books, and all sorts of bric a brac. Refreshments available. PP



**Hi!
I'm the
AVON
Lady!**

Looking for your LOCAL AVON Representative?
Contact Carolyn for your latest brochure
phone 4316008
e-mail cjpoyner@infogen.net.nz

*AVON is the world's
No.1 fundraiser FOR THE
BREAST CANCER CAUSE*

AVON BREAST CANCER CRUSADE

AVON speak out AGAINST DOMESTIC VIOLENCE

A letter recently received...

I was very pleased to receive some back copies of the Paparoa Press. I lived in Skelton Crescent from 1989-1995 so I am always interested to read about the happenings in the village and especially the people I knew.

On reading the October Press I saw the request in Arty Farties' column for a recipe for "Green Tomato Jam". My mother used to make this and also the piccalilli which she called Relish. These are from a 1946 'Truth Cookery Book' so are in ounces and pounds. I'm sure these types of recipes are quite forgiving and a little more or less won't matter.

Good luck, Ngaire Yee, Pukekohe

Green Tomato Jam

6 lbs tomatoes, 2lbs apples, 1½ lbs preserved ginger.
Cut all up small, add 1 cup water and cook until a little sets in a saucer. Bottle in the usual way.

Green Tomato Sauce

6 lbs tomatoes, 3 large onions, 3 large chillies, 1 cup brown sugar, 1tsp each of grated horseradish, cinnamon, ground ginger, allspice, cloves and mace (tied in muslin) and malt vinegar. Slice tomatoes and onions into a dish, sprinkle each layer with salt, stand 24 hours. Strain and put into pan and barely cover with vinegar. Boil altogether for 3 hours; sieve or process and bottle. Cork when cold.

Green Tomato Piccalilli

6 lbs tomatoes, 2 quarts of malt vinegar, 1 lb treacle, 1 Tbsp salt, 2 Tbsp curry powder, 2 Tbsp Mustard powder, 5 large onions (sliced). Boil all together until soft, thicken with 5 Tbsp flour mixed smooth with some vinegar. Boil another 20 minutes more.

PLUMBER

Kaiwaka to Ruawai

- 30 years' experience
- All plumbing services including new housing and maintenance



ANDREW KENNY
ph 027 642 8320

Lance Keay Contracting Ltd

- Effluent Pond Cleaning
- Single Pass Tillage & Seeding
- Cultivation
- Fertiliser Spreading
- Hay & Silage Mowing
- 6 Ton Trailer

Taipuha RD1, Paparoa, 0571
09 431 6308 021 383 908
lance.k@extra.co.nz



The juniors have been very excited with the new woodwork benches and the sound of hammering is loud and clear before school, every morning tea and lunch break, and sometimes during class time too. Many interesting creations have already been made. Thanks Pauline Cant and Jim Wilson for making the benches for us.



Paparoa School

Fantastic start to school year



Kamo Canvas erected our new shade sails in front of the classrooms and over the sandpit at the end of January. This has improved the light and heat inside as well as allowing us to spend more time outdoors.



Each classroom has had tadpoles and it was very exciting to see them develop into frogs.

Our vegetable gardens have been cleaned out ready for new development and we now have two wonderful planters at the front of the school with strawberry plants, a range of lettuce varieties and several herbs. Thanks to Rowie Panhuis for donating the herb and lettuce plants. Everyone has enjoyed daily swimming and it is great to see the children's water confidence and abilities continue to improve. This year we have again been fortunate to have Kirsty Hamlin from *Swim for Life* coming in on Mondays to help us all with learning to swim & water safety.

Petrina from *Team Energize/Sport Northland* is also working with us again. She has been helping us learn about the kinds of food that are best to have in our lunch boxes. We need to include more food that enable us to Glow, Grow and Go and less food that makes us Slow.

We have also played games that build teamwork and co-operation skills. The junior children are also

enjoying PMP (Perceptual Motor Programme), and are improving their balance and co-ordination skills.

Everyone enjoys weekly class library visits and we have added a number of new books to our collection.

We received a very special book in February. Julia Donaldson and her husband who were visiting New Zealand on holiday and attending some other book events, very kindly gifted a signed copy of Julia's famous book *The Gruffalo*.



LOOKING FOR A FRESH APPROACH?

It's all about people and the love of the land.

Northland Country

Your local agent

is ready to list ... are you ready to sell?

Let's talk.



Catherine Stewart
Bayleys Northland Country
M: 0800 422 959 B: 0800 80 20 40
E: catherine.stewart@bayleys.co.nz



THE KAURI MUSEUM

Real New Zealand Heritage

What's on at your Museum this Autumn

ANZAC Exhibition: 25 APR– 24 MAY

ANZAC Day: 25 APR 10:30AM

The Man From Matakohē Exhibition: Open Daily*

FREE Entry to the Museum for residents of the Old Otamatea District.

*Special Exhibition Charges Apply

5 Church Road, Matakohē, Northland. p: 09 431 7417 w: www.kaurimuseum.com

School Principal resigns

To the parents and Community of Paparoa:

We are saddened to announce the resignation of Paparoa Primary School Principal, Mrs Kim Tavinor, with effect from the end of term 1.

We have been so fortunate to have Kim in our school for the past 2 years, but she is now unable to continue the long commute from her home.

We would like to thank Kim for the tremendous amount she has done for Paparoa Primary School, and wish her well on her career pathway.

Mrs Cadman Smith has agreed to be acting principal, until the recruitment process is complete. We hope to recruit to this position, to commence at the start of term 3.

We will seek to employ a teacher for term 2, for room 1.

If any parents have concerns they would like to discuss, I can be contacted on 431 6555 in the evenings, or I am generally around at school on Fridays.

Julie Holcroft
Board Chairperson

Due to our growing roll Paparoa Primary School requires two new teacher aides and two LTR teachers to start term 2, 2015. We seek enthusiastic, inspirational and vibrant people to join our team.

Classroom Teachers

- LTR – Term 2 – Years 2 & 3 full time classroom teacher
- LTR – Term 2 – Year 3 – 6 0.4 Part time classroom teacher

Teacher Aides Contract will be Term 2 until end of school year, term time only. Hours are Mon to Thur 8.30am to 12.30pm.

- Teacher Aide to work with New Entrant classroom
- Teacher Aide to work with the Years 3 to 6 classroom

Please send your CV, two references and covering letter outlining why you want to join our team. Applications close 3pm Friday 20th March. Send to Paparoa Primary School, PO Box 15, Paparoa, 0543 or email to principal@paparoa.school.nz. For further info phone Mrs Kim Tavinor, Principal 09 431 7379

Yoga classes benefit health

Yoga is now in full swing, starting off gently for new friends, easing back for others, and now it is ready to bring all the benefits - including help for sleeplessness, depression and stress, to name but a few.

Based at the Sports Pavilion, Chair Yoga (9am on Thurs) is proving popular, with the social atmosphere not deviating from our purpose - and results are already becoming evident.

Monday mornings, 8.30am and Thursday evenings 5.30pm, still have space for newcomers.

If you have never tried Yoga before, classes are relaxed and safe for all ages, genders & religions!

Jenny Gilberd-Longdon



QUALITY EXTRA VIRGIN OLIVE OIL

Grown on the Kaipara

Winners of Gold, Silver, Bronze Awards Oliveti & the Easter Show

From Farmers Market fortnightly
Or our Olive Grove located at
46B Merril Rd (off Petley Rd)

Ph 431 7572


R & D MacDONALD COMPUTERS

Call Ross with your computer problems & repairs
He'll even build a computer to your specifications



Ph 09 431 6221
027 932 8114

email: ross@paradisebreeders.co.nz



ARTS ON TOUR NZ PRESENTS

THE Jews Brothers BAND

20TH ANNIVERSARY TOUR

www.jewsbrothers.com

creative.nz

ARTS COUNCIL OF NEW ZEALAND TOI AOTEAROA

Thursday 9 April 7.30pm
Maungaturoto Country Club

Adult \$25, Gold Card \$20, Student \$15

Groups of 6 or more \$20pp

book at ort.org.nz and door sales on the night



PAPAROA HOTEL

TAKEAWAY MENU

<h4>BURGERS</h4> <p>Cheese.....\$7.50 Prime Angus Beef...\$7 Chicken.....\$6 Vegie.....\$6 Fish.....\$6 Bacon & Egg.....\$7</p>	<h4>PIZZAS</h4> <table border="0" style="width: 100%;"> <tr> <td>BBQ Chicken</td> <td>Ham & Pineapple</td> </tr> <tr> <td>Meatlovers</td> <td>Hearty Local</td> </tr> <tr> <td>Seafood</td> <td>Vegetarian</td> </tr> <tr> <td>Supreme</td> <td>Cajun Chicken</td> </tr> </table> <p>Sml \$15 Lge \$20 available Tue-Sun from 5pm</p>	BBQ Chicken	Ham & Pineapple	Meatlovers	Hearty Local	Seafood	Vegetarian	Supreme	Cajun Chicken
BBQ Chicken	Ham & Pineapple								
Meatlovers	Hearty Local								
Seafood	Vegetarian								
Supreme	Cajun Chicken								

EVERYTHING ELSE

Battered Fish\$3.50	Battered Mussel\$2.00
Hotdog on a stick.....\$2.50	Potato Fritter\$1.50
Chips min\$2.50	Sausages\$2.00
Mussel Fritters\$4.00	Wedges.....\$6.00
Curry Roll\$2.50	American Hotdog\$4.50
Spring Roll\$2.50	Battered Sausage.... \$2.50
Battered Oyster\$2.00	6 Chicken Nuggets ..\$3.50
Battered Scallop\$2.00	

HOURS: Tuesday - Sunday 5pm til late

09 431 7359

Moving to Paradise

Our move to Paparoa came after we'd lived in many places around New Zealand and not found any of them quite right, least of all our last place of habitation. As a Far Northerner living in Auckland, I was increasingly keen to get back to the country and, in particular, the North.

We looked long and hard in the north east, but saw Auckland-style suburbia on the march and so headed west. We fell in love with a section in the rolling hills of Paparoa, where there was real countryside inhabited by real country people – and where any newbies were fitting in, rather than looking to bring their baggage.

We snapped up our piece of paradise, knowing we couldn't move immediately but wanting at least a weekend escape until such time as we, hopefully, could.



NZ kaka beak in full flower at Rahui Gardens

The property was a bare block with no access so we spent the early years of property ownership doing backbreaking work with no on-site facilities, coming up for the day or camping overnight. Initially we were clearing 3 metre high gorse and removing blackberry – and there was a lot!

In the meantime, back in the urban jungle, I was retraining as a landscape designer specialising in native plant gardens and restoration.

One of the best things I did was wangle our Paparoa property into one of my final year design projects. This forced me to plan our property development

Rahui Gardens

Jacqueline Knight
09 431 7022 - 021 488 822

Landscape Design Services include:

Garden consultations - a visit and verbal advice
Garden/lifestyle block design, building/garden placement
Revegetation plans
Streamside restoration
Plant lists and planting plans
Native plant sourcing
Ecological Reports, soil, aspect, plants suited to the area

jacqueline@rahui.co.nz

www.rahui.co.nz

144 Wearmouth Rd, PO Box 130 Paparoa

thoroughly rather than just having a go here and there, as things occurred to us which, I suspected, would lead to regrets and more work in the long run.

Our land has a significant chunk of bush and we wanted to add to this without mucking up the ecosystem so I started my planning with an ecological investigation, which taught me all about the native plants and animals of the area. We wanted to give rare local plants and animals a sanctuary to live in so used this information to plan for food sources and shelter for birds and skinks.

I also learnt about the history of the area. This gave me an understanding of how the land had come to be with its podzolized soils from the years of kauri, ash layers showing burnt off areas and the manmade dips and hollows of previous gardening and habitation.

After this it was time to think about where to put everything: driveway, sheds, fencing, house site, gardens, orchard, areas for restoring to natural state, and a nursery site to grow all those plants. Everything went on to a drawing and associated written description. This plan has been invaluable as it gave us a strong sense of where we were starting from, where we were heading and how it would eventually look.

Jacqueline Knight (part 1 of 2)

Jacqueline specialises in landscape design. see advert this page.

North Kaipara Volunteer Coastguard

We would like to take the opportunity to thank the Paparoa Market organisers for allowing us to have a free table at the markets in December 2014. We appreciate very much the support from your community.

I know our usual stalwarts, Dorothy, Gravy, and Andrew enjoyed the morning and the terrific support from all the locals and others who bought the Coastguard Summer Lottery tickets.

Through their generosity we sold \$450 worth of tickets. As the lottery will be drawn before this goes to press, we wish everyone who purchased a ticket all the best.

The unit has had a quiet summer with only two major incidents and three requests for assistance.

One major complaint that we get is of boats speeding past smaller dinghys. Please be aware of your wash and the waves you can cause, and slow down when approaching a smaller vessel.

We hope all readers had a happy Xmas and enjoyed the great summer so far this new year. (Like everyone else I was watching the water tank).

Walter Smith

KMU SURVEYS LTD

MAUNGATUROTO

Ken Urquhart

Licensed
Cadastral
Surveyor



09 431 8705
021 161 2344

kenurquhart@extra.co.nz



What's Hot

The great success of this year's Paparoa Show.

What's Not



NZTA taking so long to repair the serious slump outside the Dairy but thankfully its done now.

Computer Use & Training

Getting your computer to work the way YOU want

Call Rach in Paparoa
022 170 5599
rachel.sutton@piper.co.nz

"No job too small"

Ross Latto

LICENSED BUILDER

House construction, alterations, renovations, general repairs

Ph **09 431 7442** **021 772 766**
PO Box 17, Paparoa



Mrs Murphy says that 'if you don't take care of your body you soon won't have anywhere to live'.

Carting home #1!

Ryan Owens won his club champs in February at Cartsworld, Whangarei. This leaves him placed 1st equal with one more meet in March when the overall winner in his class will be decided.

Not bad, considering this Paparoa teen only entered the fast and dirty world of go-cart racing in March 2014.



Ryan is hands on, helping to build and repair his car, alongside his dad Glen.

There were a few bent and broken parts from the latest race, luckily easily fixed. He plans to continue, "So long as Mum and Dad don't run out of money".

And the sky is the limit; big names in Motorsport, such as Scott Dixon, got their starts in carts - and that could mean pay packets to repay many loans!

Congrats Ryan!

And good luck for the last meet in March.

PP



art What is art?

As first year students at art school we were given the topic for our first essay, "What is art?" Although there is no single answer, there are insights that can be gained from experienced practitioners.

Maria Abakanowickz, Polish sculptor and fabric artist has said, "To be an artist, you must learn to live on the edge of your uncertainties."

And from English painter Frank Auerbach, "To do a painting that one knows how to do is not art ... Art is discovery."

Art as exploration and discovery is not defined by the materials used, but by the intent and actions of the artist. The artist may use paint on canvas to seek ways to express their vision but they may also be using fabric, a camera, clay or found materials. They are trying to see something in a new way and to communicate that.

The ideas artists attempt to convey may be simple or complex, and their challenge is for the work to provide sufficient interest to encourage the viewers to move beyond a single glance and to think about what they are seeing.

By using carefully selected visual language: colour, composition, meaningful forms and references, an artist strives to provoke a response to their work; to tell a story.

Those experiencing art need also to engage, taking the time to move beyond their initial response of, "I know what I like"; to look carefully and think about the artist's message. They will find it very rewarding.

Helen Budd

A1 Cats Boarding Cattery

Ken & Faye Subritzky
548 Pahi Rd



Ph 09 431 7477
www.a1cats.co.nz

Ross Murphy Plumber

CERTIFYING
PLUMBER

NEW HOUSING
RENOVATIONS
MAINTENANCE

09 431 7510
021 424 252



You won't go away hungry!

THE CRUISER BAR and GRILL

- Wholesome, affordable meals
- Fully licensed
- Family friendly
- Inside-outside dining
- Private functions

In the
village,
Paparoa
Valley
Road



OPEN WEDNESDAY to SUNDAY, 5pm 'TIL LATE

ph 09 431 6918

M.K. Weber Sawmiller

CONTACT Marek by phone or drop into the mill
94 Tinopai Road, 09 431 7170

WE SELL:

- Pointed Electric Fence Battens
- 1st & 2nd Grade Fence Battens
- Retaining Wall Timber
- Weather Boarding
- Rough Sawn, Gauged & Dressed Timber
- Private Milling Undertaken



Timber cut to ANY size to suit your order

PAINTING

Building Gib Stopping

- Alterations
 - Maintenance
 - Interior & Exterior
- anything considered*

CAN WE FIX IT? YES WE CAN

PATRICK JOHANSON, FISHER ST, PAHI
021 154 5679 09 431 6020
patpats@farmside.co.nz

SHEPPARD ELECTRICAL LTD

ELECTRICAL INSTALLATION
AND MAINTENANCE

Bill Sheppard
Electrician



021 975 618

OR
a/h 09 431 7196



HEY, KIDS . . . A CRICKET WORDSEARCH

The 2015 Cricket World Cup is in full swing right now. The opening ceremony was held in Christchurch and from 14th February to 28th March, teams from 14 countries will be battling it out in games being played in both New Zealand and Australia.

We hope you have fun with this wordsearch of some common cricketing terms.

We found this great poem on cc4forum.co.uk. Perhaps you could have a go at writing your own cricket poem.

The Bowler

With the three fingered grip
I'm ready to roll
With ball in my hand
I'm going to bowl
I start my long run up
Keeping it steady
I'm near to the wickets
And almost ready
I pitch the ball a slight to the right
It curls to the wickets
At just the right height
The batter looks worried
He knows he can't hit it
It misses the bat
And smashes the wicket
OUT!

e	m	s	x	v	u	m	b	y	a	e	d	e	c	m
r	x	l	i	o	s	a	r	r	x	s	c	r	l	f
i	r	i	q	f	l	a	t	v	j	a	p	e	w	y
p	r	a	y	l	d	x	i	r	a	e	l	k	o	g
m	e	b	r	n	e	x	n	w	r	r	r	b	t	
u	w	q	u	v	y	x	n	p	s	c	e	o	o	g
l	t	o	t	b	k	j	i	b	d	d	v	y	w	s
b	b	s	n	v	m	l	n	s	i	u	o	c	l	t
n	o	v	e	r	s	f	g	w	n	v	c	b	e	u
d	a	c	c	v	q	b	s	q	a	b	c	k	r	m
z	c	h	o	w	z	a	t	b	b	x	b	e	w	p
b	f	p	i	t	c	h	j	t	e	k	c	i	w	s
y	v	k	q	e	v	c	u	h	e	l	e	v	e	n
e	s	n	u	r	c	y	l	g	o	o	g	b	o	p
m	g	q	n	a	f	i	y	a	m	p	o	j	o	h

bails
ball
boundary
bowl
bowler
bye
century
cover
crease

duck
eleven
extra
googly
howzat
innings
over
pitch
runs

six
slip
stumps
umpire
wicket
wide
yorker

KAIPARA DIAMONDS MARCHING TEAM

Looking for fun, fitness and friendship?



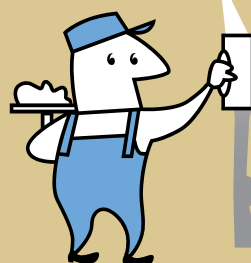
If you are between 40 - 80 years old
and would like to join our Marching Team

Please contact Connie 09 431 9077
or Lyn 022 070 8674

We practice every Tuesday 3 to 4.30pm, Maungaturoto
time could be changed to best suit members

TINOPAI PLASTERERS

WE GUARANTEE THE HIGHEST QUALITY FINISH



35 Years experience in...

- GIB Stopping
- Fibrous Plastering

for FREE quote, call us now!
Trevor 021 0300 073

Paparoa Press celebrates ...



This edition marks three years of the new monthly Paparoa Press format. Every month hours of volunteer time go into creating a unique edition of which we are proud. Since last month's report on producing the Press, Deb Clapperton & Jenny Gilbert-Longdon have joined the Press Gang & now contribute ideas and articles under the PP banner. PP welcomes contributions and suggestions from its wide readership. Contact press@paparoa.org.nz

PAPAROA LIBRARY - EASY READING



It has come to our attention that we have a member with a child with dyslexia who finds it difficult to select suitable books. As this is not an uncommon reading disorder, the library will endeavour to provide more helpful material for these young readers in future. Much information about dyslexia is available on the internet: *The Yale Center for Dyslexia & Learning* among others.

There is a publisher who formats books especially to help people with this problem and which are readily available. They are suitable for all readers but are especially helpful for children with this problem. Dargaville Library is making their collection available on loan to Paparoa Library and there is a small trial selection on our shelves at present.

If your child has this condition and you would like to try these books please ask the duty librarian for them, they are spine labelled *Easy Reading*. If they prove helpful we will follow up with further book loans from Dargaville on an on-going basis. Faith, Sue and/or Jenny would appreciate hearing your feedback on this plan, whether the books have been helpful to your child, and your ideas on age appropriate subject matter and information.

Are there any readers who enjoy graphic novels? We find we are also able to obtain loans of these books from Dargaville. If you would like to try some of these books, please let us know. If they prove popular, again we will be able to arrange loans of these books on a six-monthly basis. If you have come across an author whose books you enjoy others may also enjoy them. We are happy to hear about new authors we might try.

Happy reading,
from the Paparoa Library desk staff

Pioneer Luncheon

The Paparoa Lions are looking forward to hosting the annual Pioneer Luncheon, at Paparoa War Memorial Hall Friday 20 March.

This event was originally held to honour the pioneering families of the district and give the senior members an opportunity to get together and take time out of their busy lives for a shared luncheon.

The original pioneers have long since departed and over the years the criteria have changed to include anyone over 65 years who lives, has lived, or has an association with the Paparoa district. The luncheon is now run by the Paparoa Lions and includes a delicious lunch, entertainment and a chance to reminisce with old friends and make new ones.

Invitations were sent out in mid February. Anyone else who would like to attend, or who knows someone who might like to come please contact Pete Hames 431 6822.

KAURI COAST SEAFOODS

Oysters • Mussels • Smoked Fish

Now agents for UFO Cold Smokers, Cookers & Accessories



09 431 6684

021 245 8820

540 Pahi Rd
Paparoa

Fresh flounder supplies daily

GENERAL ENGINEERING

Rust Repairs and
Maintenance
Cars - trailers - horse floats
General welding
including alloy
Custom built floats and trailers

Ken Subritzky

09 431 7477

021 121 4879



BulbsDirect

PROUD TO BE LOCAL

NZ's Premium Online Flower Bulb Store



www.bulbsdirect.co.nz
info@bulbsdirect.co.nz

g.a.s. Paparoa

Safety First

- Petrol, Diesel & Oil
- LOWEST priced milk
- Great variety of Bait



John & Nicki Eddy
09 431-6302

Mon-Fri 6.30am-6.30pm
Sat 7am-6pm; Sun 7.30am-5.30pm



Fire Force needs help & donations

In order for the Paparoa Fire Force to run efficiently, we rely on the community for their help and involvement.

From volunteers giving up their time, people giving their spare change to the donation boxes and to small businesses helping out where they can, help comes in many forms and from many sources.

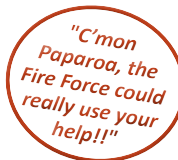
The Fire Force are now looking for a very specific donation.

We have at our station, a Heartstart AED Defibrillator. This is a very important, life saving piece of medical equipment & it desperately needs a new set of pads. If anybody can help by purchasing us some, please call Yvonne on 09 431 6668.

We would also like to say a huge thank you to the community!! We have had very few call outs since the fire ban was put in place & that is great news. So a huge thanks to everybody for being responsible about fire and patiently waiting for the ban to be lifted. Awesome!

The Fire Force are always looking for new members. Young or old, female or male, we want you. Our last medical call was attended by 4 awesome firemen who had a combined age of 266 years - with no walking sticks! If they can do it, so can you!

Yvonne Yorke



Ground Cultivation: Chisel Plough & Power Harrow
Planting: Power Harrow & Airseeder (low to high rates)
Mulching: 2.8m mulching mower with airseeder if required
14 tonne Tip Trailer Bathtub construction style w/silage crate

RELIABLE, COURTEOUS SERVICE!!

Contact Wayne: 09 432 1117 or 021 728 963

FRESH & FROZEN Oysters, Mussels, Fish & Kina



Wed, Thur, Fri 10am - 4pm
 Sat 9am - 1pm
 1994 Paparoa Valley Rd
 09 431 6089

Paparoa Store

Proudly Supporting Paparoa

OPEN 7 DAYS

Monday-Saturday 7am-6pm
 Sunday 9am-5pm



We stock a great selection of
 CONFECTIONERY, ORGANIC, DELI, MEAT,
 FRUIT, VEGES, FROZEN GOODS, BEER, WINE
 and a wide range of grocery items at excellent prices

DVD's \$1 to \$8 per night
 EFTPOS NZ HERALD POST CENTRE

Phone / Fax 431-7320
 Cnr. Franklin Road and State Highway 12

Pets in the Valley



I don't often get to work with donkeys as there are not that many of them in this part of the world, but when I do I really enjoy them.

One of the few times I have dealt with an animal older than me, was an injured 45 year old donkey! They are much longer lived than horses and can often make it into their 50s.

The most common problem they have is with their feet which become over grown and misshapen quite readily - a bit like goats. They both evolved in more arid climates and the wet Northland winters can often cause foot issues. Other than that they are relatively uncomplicated and hardy animals.

In Tanzania I saw donkeys being used by the Masai people for carrying water and you can appreciate how valuable these animals are in simple agricultural communities.

With the talk of 100 years since Gallipoli one of my favourite children's' books is *The Donkey Man* which tells the story of John Simpson Kirkpatrick who found a donkey and used it to transport wounded soldiers down to the beach at Anzac Cove. Their strength and placid nature, plus the ability to live off the smell of an oily rag, made them ideal in that war time environment.

In comparison the donkeys I have met in New Zealand have very relaxing and enjoyable lives.

Hope you are enjoying your animals.

Janine



Homekills

All Beef aged
Salami ▲ Bacon ▲ Ham ▲ Sausages
Hamburger Patties

Traditional Manuka wood smoked
Bacon, Ham & Salami

Over 25 years experience
 For prompt & professional service contact
 Wayne or Annette

09 439 2020 • 021 401 934

ruawaihomekills@gmail.com

Covering the Kaipara and Whangarei regions

OUT & ABOUT around the district

Three cheers to Graham Murray, Stu Robertson, Rowie Panhuis & Janice Booth for the regular mowing, spraying, weeding & mulching around the Hall. The carpark would look exceedingly scruffy without their care! If you would like to help with various little projects at the Hall, please ph 431 7290, thanks.

Seedling Problem Looming? The flowering cherry trees which are 'beautifying' the Village, are dropping many seeds and the fear is that this could be a big problem in years to come. If the seedlings get established in our *wild* areas, we could have yet another weed infestation to deal with.

Ngaire and Andrew Hames proudly welcome baby Olive Hames, who arrived early February. She is named after a daughter of one of the early settlers of the Hames family in the 1870's. Congratulations!

Our condolences go out to family and friends of Ray Morris who passed away recently.

Golden wedding anniversary Congratulations to Elaine & Bob Hooker as they celebrate 50yrs of wedded bliss.

The Depot Trust premises in Depot Rd have had a makeover with new board fence and re-metalling of the yard. Thanks to Huband Contractors (Powell's) and Mike Plunkett for an excellent job. This facility is home to the Paparoa Rural Fire Force as well as commercial occupants.

The Trust has secure storage for lease on a long or short term basis. Ideal for people moving or just needing space to store stuff. Phone Brian Plunkett for info 09 431 7148.

If you are wondering what happened to the **Changeable Word Sign** opposite Paparoa Store, it was hit by a runaway car! The hand brake failed and fortunately the sign posts prevented the car from falling into the river. No one was hurt but the sign will take a bit of repairing.

Thanks to Carters Maungaturoto for donating two new

Paparoa Classifieds?

It has been suggested that PP should run an enlarged 'classified' column. The aim would be to have buy and sell, work wanted, or work offered and other small items. There would be a charge for this service.

The idea has come about as the notice board outside Paparoa Store may not be serving the community as well as it could.

Other communities use an online buy/sell system. We would like your response. If you think you would use this service or you think this idea is worthwhile or any other suggestions, please contact:

press@paparoa.org.nz PP

posts, and to Graham Murray, Ken Chambers and Pete Hames for helping restore this valued community asset. PP

HANDYMAN



**all jobs,
odd jobs**

BUILDING & PAINTING

**ph Cam 431 6309
021 77 77 92**

*Kevin's Shed
panel beating & repairs*

Just ask

027 642 4991

09 431 6444



3245 Paparoa-Dakleigh Rd



Motoring Matters

Following on from last month's article about the Talbot Lago; it was sold in the Retromobile Auction in Paris for \$1.2 million! Five times the pre-auction estimate.

Another Talbot in very sad condition, badly damaged at the rear and left side and very rusty, made \$2.7 million!

The remains of an Amilcar, a well respected make of small French sports car, estimated to fetch \$5000, reached \$50,000!



What more can I say?

Graham Roberts



**NORTHLANDS BIGGEST
BED OUTLET STORE**

- 1/2 PRICE BEDS
- SECONDS-SAMPLES
- SLAT BEDS
- PILLOWS
- TOPPERS
- ADJUSTABLE BEDS
- BEDROOM FURNITURE



**STOP BY AT ELLE CEE'S AWARD
WINNING CAFÉ- WHEN YOU COME.**

**(09) 439 2243
18 Freyberg Road, Ruawai**

FENCING CONTRACTOR

For all types of fencing, stockyards, handyman work, tree felling, tractor work etc.



phone
**Mike 09 431 6509
027 203 2694**

email
mandsplunkett@slingshot.co.nz

FARMWORK SERVICES LTD

Letters from the Old Post Office

When a rose is not a rose ...

Twas another sunny morn and the man in the shed was not yet in the shed, neither was his colonial side kick. In fact, being un-coffee'd, he remained oblivious to any other activity. Namely myself, adjourning to the local A&P show and enjoying a quick perusal of, yes you have it, the plant and vegetable tables.



Grazing past the beauteous beetroot and plump onions I beheld a long missed favourite. I stood still, frozen like a startled hare. But then, my heart leapt up.¹ A rose, but fortunately or unfortunately as the spirit moves you, with no thorns. Graceful, slender leaves swayed in the breeze of my abrupt stopping. I was entranced. Then without thought or conscious volition, the rose was in the bag.

This tuber rose has a most beautifully rich and seductive scent. She whispers of sultry nights and silky sheets. Her pale tubular flowers cluster from the tall spikes and glow gently in the moonlight. In short, she is magnifique and could even, as I may murmur to the man in the shed, serve as some pale beacon of light to guide him home. I will mention the delight with which he may at last glimpse the luminous glow from its milky petals and know he is not lost, but merely misplaced.

¹ *My heart leaps up when I behold a rainbow in the sky ...*
(Wordsworth)

Deb C



Paparoa Village Café

Mon-Sat 6am-3pm
Ph 09 431 6069

Relax & connect
with
family & friends
over
fresh, hearty food
at your
comfortable
community café

Fresh faces at Village Café

A newcomer to the Paparoa scene, Lynnlie Deverill is making a fresh start at the Village Cafe.

She has left behind many years of working in palliative care, but brings with her previous experience of work in the hospitality industry.

Along with her daughter Gena, the pair have spent many years in England, but are glad to come home to New Zealand and love Paparoa as their permanent settling place.

Lynnlie has big plans for the cafe space, and looks forward to the challenge, the first of which was stepping in and taking over in the middle of a busy summer season!

She will continue the legacy of good home cooked cafe fare, and in the future there are plans to venture into quality, ready-made meals, fresh smoothies and to develop a bistro style dining environment

which is sure to enhance Paparoa's reputation further. As well, free wifi for customers will soon be available.



Lynnlie and Gena are welcoming the continued support of locals to ease them into this exciting role.

In the meantime, the team is looking for another capable member to help out in the cafe, to be on call, 2-3 days a week.

If you have cafe experience, call in for a chat! PP



Do you want to WORK from HOME?? What if the hours were your choice?

- Design & change your life
- Gain confidence and empowerment
- Be motivated & encourage others
- Potential to earn new company car, overseas travel, free gifts & more

We are teamed with an amazing beauty company, who have been rated the No.1 Facial Moisturiser and Body Care brand for the last 10 years running.

Our company and products are top of the line in quality, but not in price.

I am looking for local women who are self-motivated and are wanting to make a change to themselves and other women, all over NZ (must be over 18yrs)

Only genuine (info-seeking) inquiries please

Phone Marj Newland 027 439 6722

Nutrimetics

BATTENSBY Bros.

CONTRACTING LTD

- Ground Cultivation • Silage and Hay
- Fertiliser Spreading • Fencing



Glenn 021 983 734 Ross 021 983 594
Ph: 09 431 6186 Email: battensbybrothers@xtra.co.nz

WHAT'S ON - MARCH 2015

SPECIAL EVENTS & MEETINGS

Tennis Coaching Paparoa, March 5 & 19

KDC Meeting Long Term Plan "Looking Ahead" 8 March, 2pm Paparoa Hall

Pioneer Luncheon 20 March Paparoa Hall

Otamatea Repertory Theatre 'The Altos' dinner and show 20 March Paparoa Hall

Community Sports & Games afternoon 28 March Paparoa Showgrounds 3.30pm

Pahi Fishing Competition 28 March start 7am - all day at Pahi

Rotary Auction 28 March, Maungaturoto Primary School Grounds 10am

Ruawai Charity Auction 28 March, 9am Ruawai Lions Club, Kaipara Kumara

REGULAR EVENTS, MEETINGS AND ORGANISATIONS

Anglican Church St Marks 1st, 2nd & 4th Sundays 10am, Hook Road, Paparoa

Ararua Church 10.30am every Sunday, All welcome ph 431 6622

Art Group Paparoa 1st Sun in month, Helen Budd's Studio, ph 431 6192

Art Studio, Ruawai Mon 10-12noon; Tue 7-9pm, ph Frances 439 2554

Arty Farties Summer Markets 9am-noon, opposite Village Green; Thur/Fri in the 'Tile Shed' ph Anne 431 6229; Crafty Kids Club alt Saturdays 10-2pm, Rm 5 Paparoa Primary School; Beginners Patchwork Group, Mon 7pm, Te Pahi River Dr.

Badminton Starts 23 April, kids 5.30pm; older/experienced 7pm, Paparoa Hall

Crafternoons 1st & 3rd Wed in month, 1-4pm, Tinopai Hall ph Lyn 431 6090

Exercise to Music Tue 10.30am Paparoa Hall \$5 ph Rose 431 7418

Farmers' Market Fortnightly Sat 9-noon, Village Green Mar 7, 21, Apr 4, 18.

Fire Force 1st & 3rd Monday in month 6.30pm Depot Rd ph Cohan 431 6668

Gardening Club 2nd Wed of month, ph Lea 431 6296

Grey Power Last Wed in month, 2pm, Hall next to Resthome, M'gto

The Kauri Museum 'The Man from Matakoho' exhibition ongoing daily

Library Mon 1.30-4.30pm, Wed 10am-12noon, Thu 1.30-4.30pm, Fri 9.30am-1pm.

Open Market days - alternate Saturdays 9.30-1pm

Line Dancing Thurs 10am-noon Paparoa Hall ph Rose 431 7418

Mainly Music Wed 9.30am Paparoa Comm Church, ph Rebecca 431 7550

Matakoho Music Makers 2nd Wed in month 7.30pm @ Sports Pavilion, \$2 pp

Otamatea Quilters 1st Tue/mnth 7pm & 3rd Mon 10am, Paparoa Hall 09 439 2262

Outdoor Bowls Maungaturoto Green ph Tony 431 6026 or Brian 431 6884

Paparoa Community Church 10.30am every Sunday, Hook Road

Paparoa Hall Functions venue ph Robyn 431 7306 or a/h Loraine 431 7290

Paparoa Lions Dinner Meetings 3rd Mon in month 6.30pm, Sports Pavilion

Paparoa Playcentre Tue & Fri 9.30-12noon Visitors welcome ph Tina 021 033 5128

Paparoa Plunket Society Coffee Group 1st Tue/month, 10am Franklin Rd

Paparoa Toy Library Wed 10.30-1pm, Paparoa Comm Church, Hilery 431 7330

Selwyn Centre Thurs 10am for over 65's, St Marks, Hook Rd, ph 431 8193

Sports Pavilion Functions venue, ph Vickie Owens 431 6432 for bookings

St Mary's Catholic Church 10am Wed, 6pm Sat, Maungaturoto

Tai Chi Mon 11am, Sports Pavilion, Showgrounds ph Shirley 431 6408

Table Tennis Tues 7.30pm, Sports Pavilion \$2 Pete 431 6822

Tennis Coaching children Tues 4.30-6pm; adults Tues evenings Ph Sue 431 6224

Ukelele Players Beginners / experts, Thur 4pm Matakoho, ph Dennise 431 7012

Waka Ama Tues & Thur evenings 5pm, Sunday 10am, Pahi Domain

White Rock Gallery Open 7 days 10am-4pm, in Library building

Yoga Paparoa Sports Pavilion Mon 8.30am, Thu 9am, Thu 5.30pm, ph 09 280 9694

PLEASE UPDATE US WITH YOUR DETAILS: press@paparoa.org.nz**HOOK, LINE & SINKER**

There are heaps of fish out there, all snapper. Three people went out for 2hrs on

Tuesday afternoon and came back with 30 fish.

There was one gurnard in this lot, but they are still scarce.

Kahawai are still not around much.



Gravy

Paparoa Press
CLASSIFIED ADVERTISING**Bee Swarms**

If you see any bee swarms,

phone Mike 431 6008
or 021 134 3747

Fire Wood for Sale

Split pine. \$50 trailer load delivered locally

phone 4316 296
or txt 021 1111 579

LOCAL TIDES for March 2015**MARCH TIDES - CALCULATED for PAHI-WHAKAPIRAU**

DATE	LOW	HIGH	DATE	LOW	HIGH
1st	3.07pm	9.07am	17th	3.17pm	9.15am
2nd	4.03pm	10.04am	18th	4.17pm	10.17am
3rd	4.50pm	10.52am	19th	5.11pm	11.11am
4th	5.29pm	11.34am	20th	6.00pm	12.01pm
5th	6.05pm	12.07pm	21st	6.48pm	12.49pm
6th	6.39pm	12.45pm	22nd	7.34pm	1.36pm
7th	7.12pm	1.17pm	23rd	7.55am	2.21pm
8th	7.44pm	1.48pm	24th	8.40am	3.06pm
9th	7.58am	2.21pm	25th	9.26am	3.52pm
10th	8.33am	2.55pm	26th	10.14am	4.41pm
11th	9.10am	3.32pm	27th	11.08am	5.35pm
12th	9.52am	4.14pm	28th	12.10pm	6.41pm
13th	10.42am	5.05pm	29th	1.23pm	7.55pm
14th	11.41am	6.06pm	30th	2.32pm	8.31am
15th	12.52pm	7.19pm	31st	3.29pm	9.30am
16th	2.08pm	8.03am			

Community Directory

EMERGENCY: FIRE ■ POLICE ■ AMBULANCE dial 111

COAST TO COAST HEALTH CARE

Maungaturoto Medical Centre: 8am-5pm Mon-Fri 09 431 8576

Paparoa Clinic: Doctor Tue + Fri 8.30am-12.30pm..... 09 431 7222

For urgent after hours medical service (Wellsford)..... 09 423 8086

DISTRICT NURSE Dargaville Hospital 09 439 3330
Healthline - 24 hour service..... 0800 611 116

HOSPICE KAIPARA Dargaville Hospital 09 439 3330

KAIPARA DISTRICT COUNCIL Helpline 0800 727 059
Mangawhai Office..... 0800 100 388

LINKING HANDS Health Shuttle Service, Maungaturoto 09 431 8969

LIONS CLUB PAPAROA Secretary Alistair Banks 09 431 6373

MAUNGATUROTO CHIROPRACTIC..... 09 431 8019

MAUNGATUROTO PHARMACY..... 09 431 8045

MAUNGATUROTO REST HOME 09 431 8696

OTAMATEA COMMUNITY SERVICES Community House 09 431 9080

PAPAROA LIBRARY Membership free-of-charge, Wheelchair access
Mon 1.30-4.30pm, Wed 10am-12noon, Thu 1.30-4.30pm, Fri
9.30am-1pm. Open Market days - alternate Saturdays 9.30-1pm

PAPAROA PLAYCENTRE Vanessa 09 431 6731, Renee 09 431 6336

PAPAROA PLUNKET Cynthia Keay..... 09 431 8187

PLUNKET Helpline 0800 933 922

PAPAROA PRIMARY SCHOOL 09 431 7379

PARENT PORT Inc. free help for families Linda 09 425 9357

PHYSIOTHERAPY Lyndsay Bargh Mon/Wed/Fri from 8am...431 8576

PODIATRIST / FOOTCARE Jayne Short 020 4022 65998 / 09 431 7188

PUKE ARANGA TE KOHANGA REO 09 431 7089

YOUTH & WHANAU FOCUS South Kaipara, Rose 09 431 7418

Photo Competition

February winner Congratulations to Yvonne Yorke for her photo at the scene of the recent fire in Franklin Road.



Winner: **Franklin Road Fire** - Yvonne Yorke



Second: **Fisher Street, Pahi Beachfront** - Jim Rowlands
Pegasus Engraving, and **Harvey Norman**, for their generosity and encourage our readers to use their services where possible. PP



Highly commended:
Taking Teddy to the Beach - Joy Bonham

Last chance ...

Last chance to enter a photograph (or two) and share your talent and passion for our unique area on the Kaipara, our people and our humour.

The final deadline for entries is 8 March 2015. Photos are to have been taken between 1 November 2014 and 8 March 2015. Send to press@paparoa.org.nz with your surname and name of entry in the subject line.

For this fourth and final month, the winner's chosen photo made into a 5x7" chromalux print, or put on to a white or black colour-change mug by Pegasus Engraving Paparoa.

A Grand Prize will be selected from all entries submitted over the four months. The winner receives a beautiful canvas print of the winning image or any image of choice – valued at \$99, from Harvey Norman Whangarei. The canvas print will be printed on high quality artist stock canvas then stretched and wrapped around a quality wooden frame and comes with a string ready for hanging!

Also a 2nd prize will be awarded – a beautiful photo frame from Skelton's Drapery Paparoa.

We are indebted to our sponsors - **Skelton's Drapery**,



Highly commended:
Walkway Sentinels - Maria Ellis

Cameron Philips CABINETMAKER

Matakohe



- Kitchens
- Custom Furniture
- Furniture repairs & restoration
- Custom run mouldings
- Stairs & Timber Doors
- Residential & Commercial Joinery

QUALITY WORKMANSHIP

09 431 7579

cgandsphilips@gmail.com

Carpet Layer

20 years experience

phone **Ian Ross**

09 431 6939 a/h
027 4996 413

REX BROWNE CONTRACTING

- Limestone & Metal Cartage
- Truck & Digger Hire
- Farm Roads
- Earthwork & Dams
- House Sites & driveways
- Wrapped Silage & Hay
- Cultivation
- Fencing & Mulching



Maize Silage
planting & harvesting

☎ 09 431 7556
☎ 021 720 590

PAINTER

Dave Stephenson

- Interior
- Exterior
- Roofs
- Mould spraying
- Waterblasting

No job too small

09 431 6623
027 490 3522